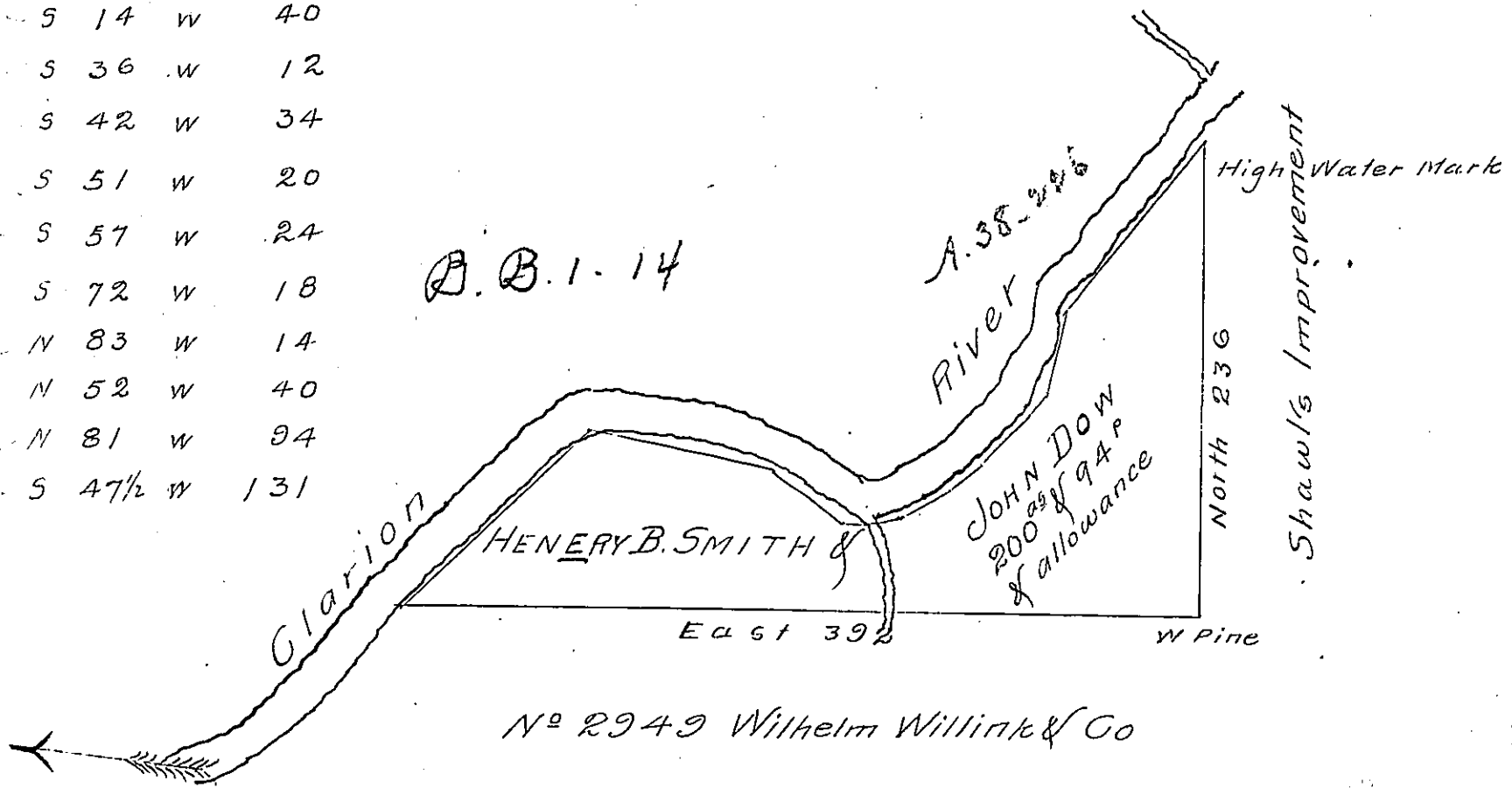


The Course & Distance
down the River

- S 38 W 108
- S 14 W 40
- S 36 W 12
- S 42 W 34
- S 51 W 20
- S 57 W 24
- S 72 W 18
- N 83 W 14
- N 52 W 40
- N 81 W 94
- S 47 1/2 W 131



Surveyed on the 24th day of November A.D. 1835 for Henry B. Smith & John Dow the above tract of Land containing Two hundred acres and Ninety four perches and allowance of Six per cent for Roads &c. Situated on the South Side of Tobys Creek or the Clarion River in the last Purchase East of the Allegheny River and Conowango Creek in the County of Jefferson. by Warrant dated the 26th day of October A.D. 1835 granted to the said H.B. Smith and John Dow

John I. Y. Thompson D.S.

To John Taylor Esq^r
Surveyor General.

IN TESTIMONY that the above is a copy of the original remaining on file in the Department of Internal Affairs of Pennsylvania, made conformably to an Act of Assembly approved the 16th day of February 1833, I have hereunto set my hand and caused the Seal of said Department to be affixed at Harrisburg, this eighteenth day of January 1907

Loac B. Brown
Secretary of Internal Affairs.